

# WAPS WELDING POSITIONERS



Models range from: 50 kgs to 30,000 kgs



# WAPS WELDING POSITIONERS

## ON A NEW FOOTING IN WELDING TECHNOLOGY

The welding system presented in this technical bulletin is your step into Automation. Automation in welding will lead you to dramatic gains in precision, quality, speed, productivity and economy. It will place you on par with industries in advance countries of the world.

In order to provide you the most suitable solution, WAPS Engineers will build systems, based on the data collected from your shopfloor. We draw upon the enormous information contained in our data bank, collated over five decades.

WAPS field experience enables it to source materials that are most reliable, ensuring quality at every stage of manufacture and installation. When you assign your welding automation project to WAPS, you have the unique opportunity to avail of advanced technology through its association with world leaders in welding.

### POSITIONER

#### Rated Load Capacity :

As low as...50Kg

As high as... 30,000Kg

It consists of a work table with necessary provision for rotating it around its own axis by 360 degrees as well as tilting it, so that the work held on it can be positioned for required working angles for better weld and convenience. The rotation of work table is clockwise or anti-clockwise.

The work table is mounted on anti-friction bearings arrangement specially designed to take overhung loads. This design helps to reduce facial and peripheral run out of the work table to the minimum at different position with load. The table is provided with "T" slots for clamping of work or work holding fixtures. The work table rotation is by a drive mechanism using A.C. motor, precision cut gears and worm reduction gearbox. The required speed of the work table for optimum welding condition is achieved by providing Variable Frequency Drive controls for the A.C. motor which gives step less variation in the specified speed range. Main frame is a rugged fabricated structure supporting all other sub-assemblies and designed as free-standing.

The tilt drive mechanism allows the work table to be positioned and locked at the desired angle.

The positioner is provided with a special direct earthing arrangement which prevents the return current from passing through the bearing, shaft or gears.



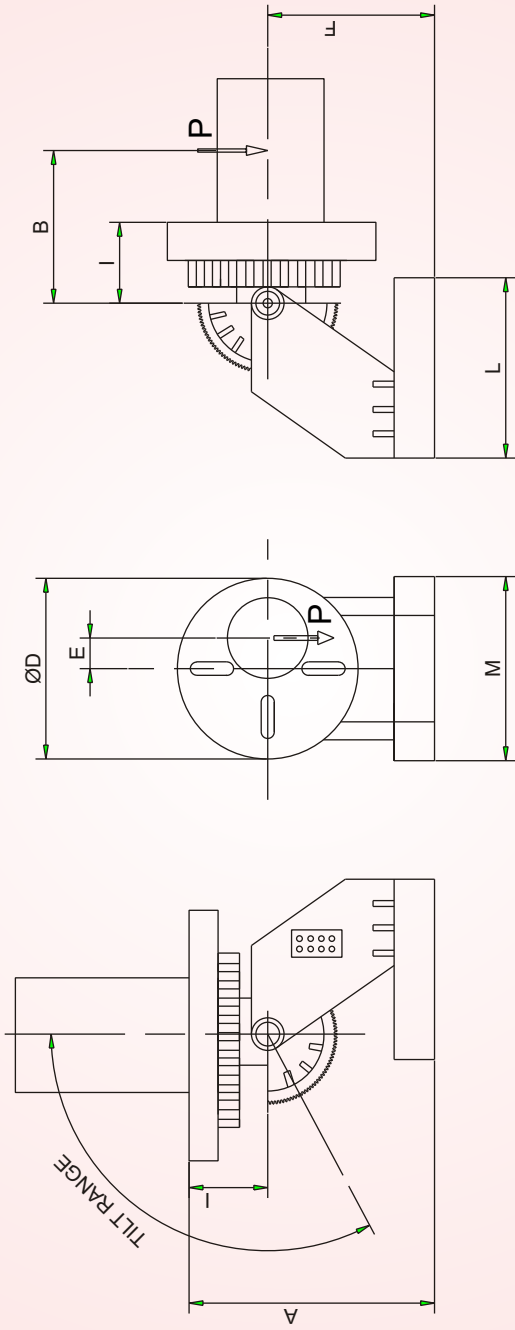
POSITIONER Model WPH 30,000



WELDERS TO THE NATION  
**ADOR WELDING LIMITED**

(Formerly known as Advani Oerlikon Ltd.)  
[www.adorwelding.com](http://www.adorwelding.com)





## WELDING POSITIONER

### TECHNICAL SPECIFICATIONS

MODEL	WPM 150	WPM 250	WPM 500	WPH 1000	WPH 2000	WPH 3000	WPH 5000	WPH 7000	WPH 10000	WPH 15000	WPH 20000	WPH 30000
CAPACITY IN ALL POSITIONS (KG.) "P"	150	250	500	1000	2000	3000	5000	7000	10000	15000	20000	30000
CAPACITY WHEN TABLE HORIZONTAL (KG.)	200	350	800	1800	3500	5500	9000	12500	16000	22000	28000	40000
FACE PLATE O.D. (MM)	550	650	850	1000	1200	1400	2000	2200	2400	3000	3000	3000
ECCENTRICITY IN (MM) "E"	50	50	60	100	100	150	150	150	250	250	300	500
SPEED RANGE (RPM)	0.25 to 5.00	0.15 to 3.00	0.10 to 2.00	0.05 to 1.00	0.05 to 1.00	0.025 to 0.5	0.025 to 0.5	0.025 to 0.5	0.015 TO 0.1	0.015 TO 0.3	0.015 TO 0.3	0.015 to 0.3
ROTATIONAL TORQUE (KGM)	7.5	12.5	30	100	200	450	750	1050	2500	3750	6000	15000
CENTRE OF GRAVITY IN (MM.)	50	50	50	150	200	250	300	350	350	400	500	650
MAX. PERMISSIBLE TILT TORQUE (KGM.) "PT"	25	54	108	300	800	1350	2625	4200	6000	10500	17500	32250
TILT RANGE (SEC)	135	135	0-90	135	135	135	135	135	135	135	110	110
TILT TIME (SEC)	MANUAL TILTING	MANUAL TILTING	MANUAL TILTING	75	75	75	75	75	75	120	150	185
NO. OF SLOTS	4	4	4	4	6	6	6	6	6	8	8	8
WIDTH OF SLOTS (MM)	14	14	18	18	22	22	28	28	28	36	42	55
OVERALL LENGTH (MM.) "L"	650	1250	1250	1330	1610	1700	1860	2500	2750	4000	4500	55950
OVERALL WIDTH (MM) "M"	770	1300	1300	1000	1370	1450	1640	2200	2350	2400	2450	2600
OVERALL HEIGHT (MM) "A"	675	855	855	1150	1200	1300	1500	1600	1745	2500	3000	4125
DIMENSIONS I F	115	165	165	200	200	200	225	250	250	300	375	425
POWERSUPPLY												

In view of continuous development, we reserve the right to modify the design and dimensions without notice.



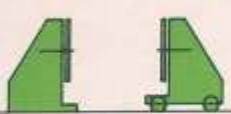
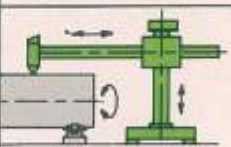


Note : 1) \*MANUAL TILTING

2) \*\* SUBJECT TO NOT EXCEEDING ROTATIONAL TORQUE. ROTATIONAL TORQUE = P X E

3) MAX. PERMISSIBLE TILT TORQUE, PT= P(C+1)

4) IN VIEW OF CONTINUOUS DEVELOPMENT DIMENSIONS/SPECIFICATIONS ARE SUBJECT TO ALTERNATIONS

## Identify your needs with this ready reckoner of ador welding systems

 <p><b>WELDING POSITIONER</b></p>	 <p><b>WELDING ROTATOR</b></p>
 <p><b>HEADSTOCK &amp; TAILSTOCK POSITIONER</b></p>	 <p><b>COLUMN &amp; BOOM</b></p>
 <p><b>TURN TABLE</b></p>	 <p><b>WIRE FEEDER HOLDING BOOM</b></p>

### Where WAPS Scores

- In-house manufacturing facility for welding machines, consumables, drive control panel, etc.
- Experience of having designed, developed and executed over 1000 various systems.
- Far-reaching network to ensure quick response to pre and post order sales and services.
- Widespread offices at your disposal to elaborate any type of welding turnkey project you may be interested in.
- Our clients, both big and small, stand testimony to our skills.
- Design using latest AUTO CAD Inventor 2010 including stress analysis leading to a well engineered system for long trouble free service.



In view of continuous development, we reserve the right to modify the design and/or dimensions without notice.



*WELDERS TO THE NATION*  
**ADOR WELDING LIMITED**

(Formerly known as Advani Oerlikon Ltd.)  
[www.adorwelding.com](http://www.adorwelding.com)



5/A, Corpora, L. B. S. Marg, Bhandup (West), Mumbai - 400 078. INDIA  
Tel.: +91 22 6623 9300/35, 2596 2564/77. Fax: +91 22 2596 6562/6062 Email: [cmo@adorians.com](mailto:cmo@adorians.com)

**Chinchwad Office**

P. B. No. 2, Akurdi, Chinchwad, Pune - 411 019, India  
Tel.: +91-20 4070 6000 Fax: +91-20 4070 6001 Email: [waps@adorians.com](mailto:waps@adorians.com)